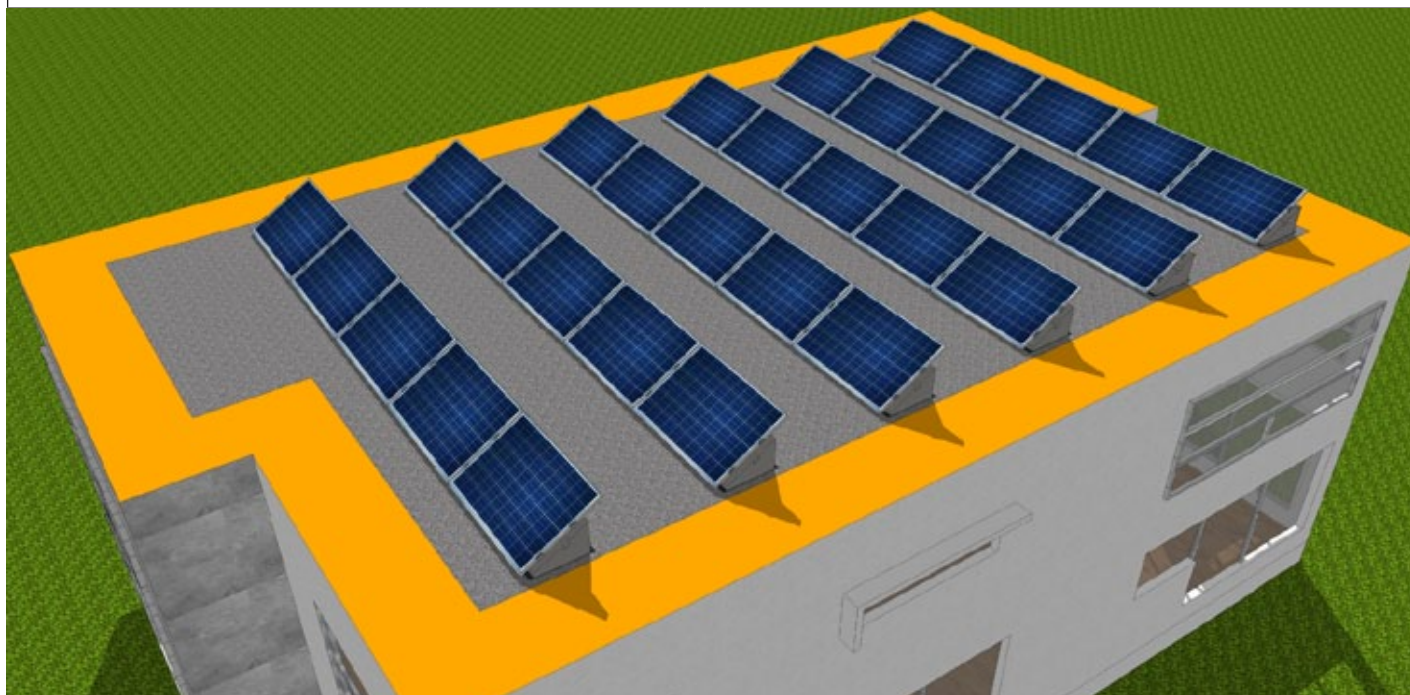


BALLAST WITH 30° ANGLE - Item 23030



DESCRIPTION	Sun Ballast is mainly made of concrete, which ensures low wear over time and high resistance against the harshest weather conditions.		
APPLICATION	Any type of flat or low-pitched roof with up to 10° slope, on the ground, on compacted grounds with inert materials or flooring.		
MODULE TILT ANGLE	30°	NUMBER PER PALLET	16
BALLAST WEIGHT	48 kg	PALLET DIMENSIONS	58 cm x 98 cm h= 74 cm
DISTANCE BETWEEN PANELS	From 100 cm to 120 cm	OVERALL PALLET WEIGHT	768 kg
PV MODULE ORIENTATION	Horizontal	PV PANEL DIMENSIONS AS PER DRAWING	165 cm x 99,2 cm

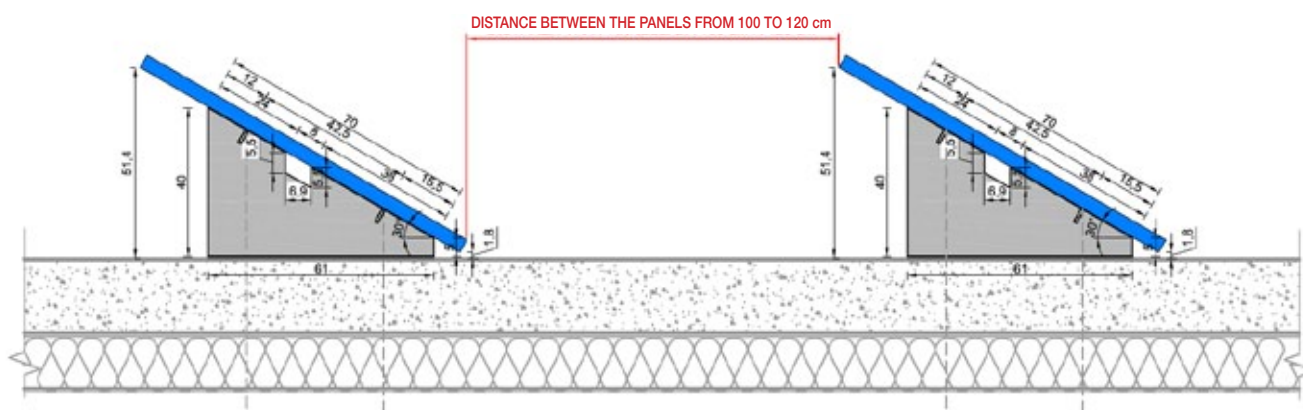
PANEL INSTALLATION ON FLAT ROOFS



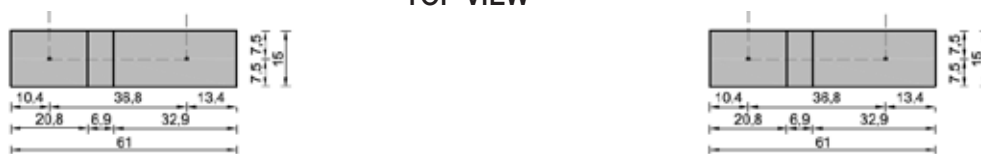
30° BALLAST
Item 23030

BALLAST DIMENSIONS AND PANEL HEIGHT FROM THE GROUND - UNIT OF MEASUREMENT cm
HORIZONTAL PANEL INSTALLATION

FRONT VIEW



TOP VIEW



GENERAL NOTES

For information, please visit www.sunballast.it

BALLAST VIEW ON FLAT ROOF

